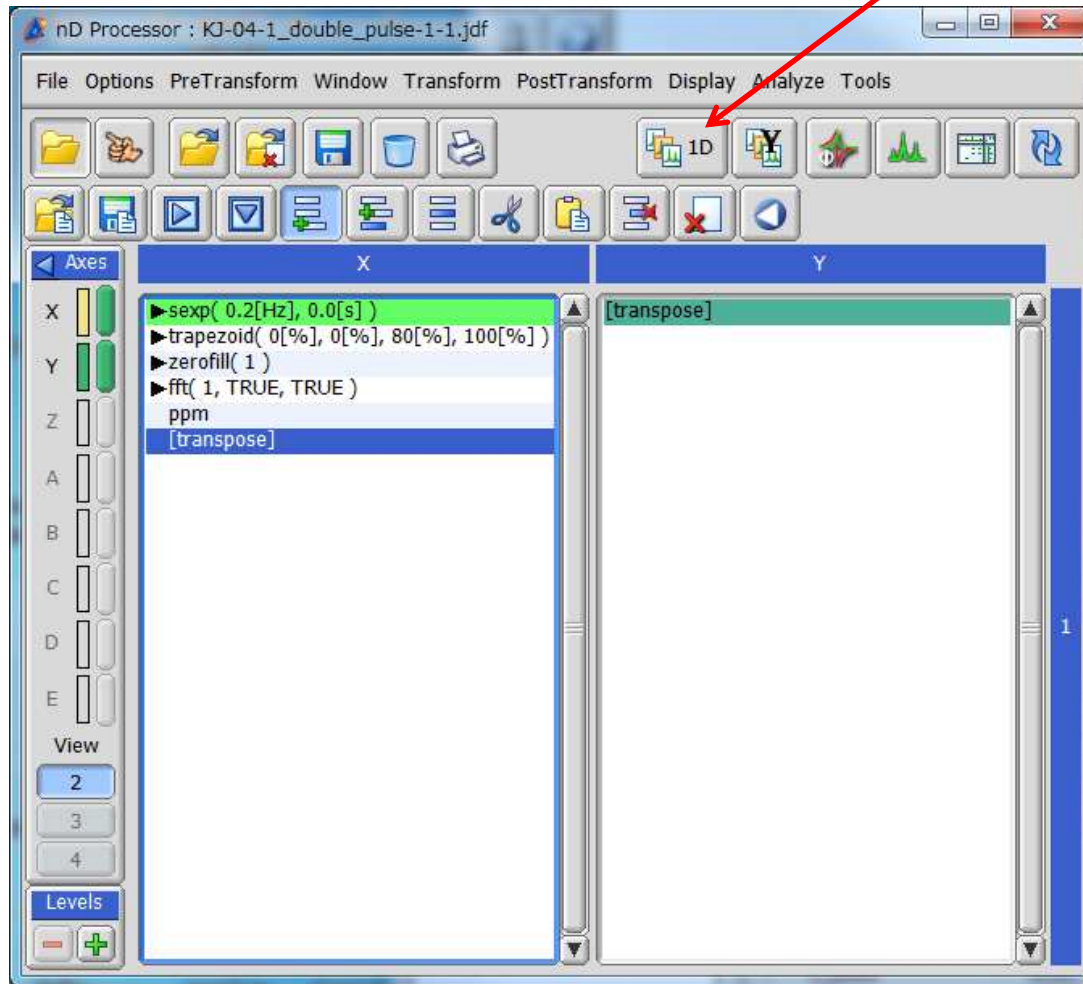


T1 数据处理

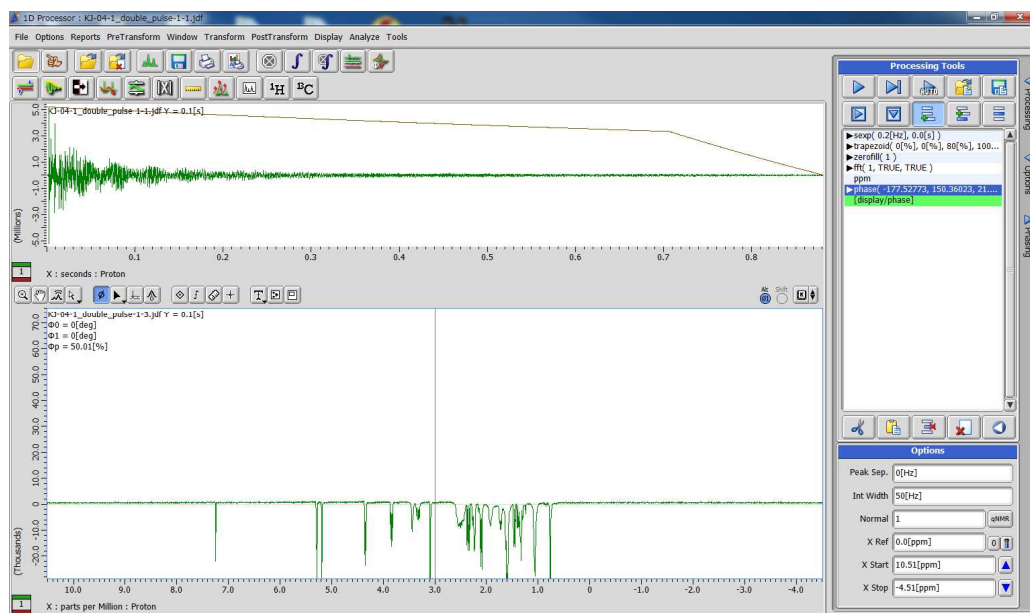
Yueqi Ye

JEOL BEIJING

打开T1数据， 点击， 调整相位

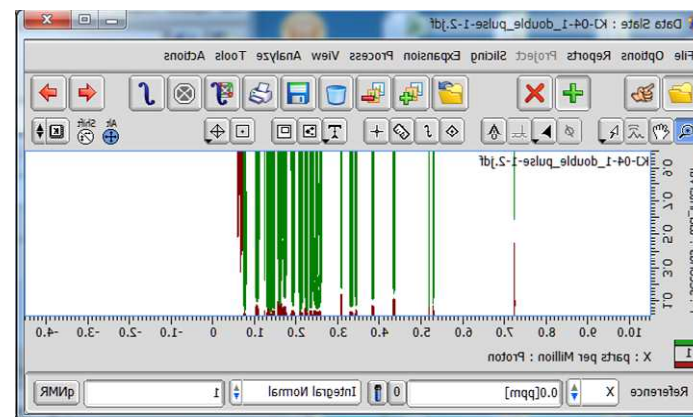
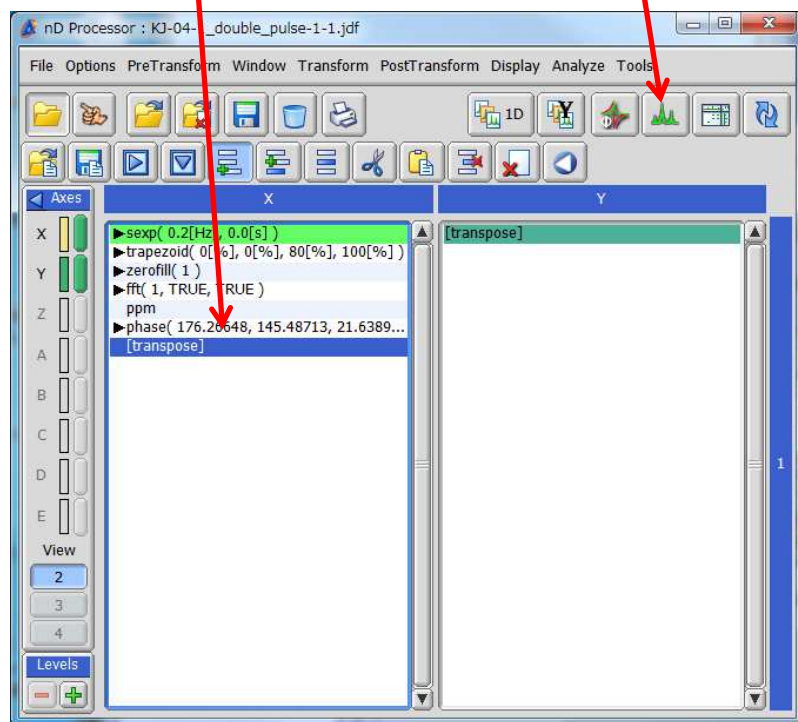


调整相位，第一个数据相位朝下，
然后关闭此窗口

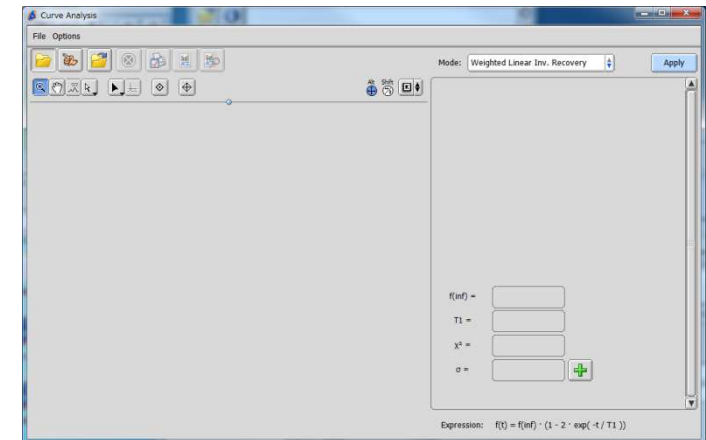
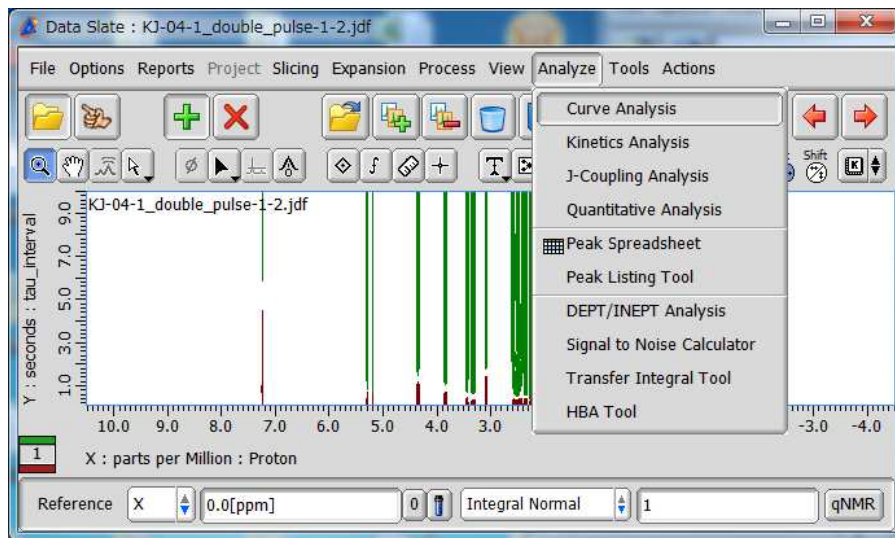


然后点击，打开2维显示

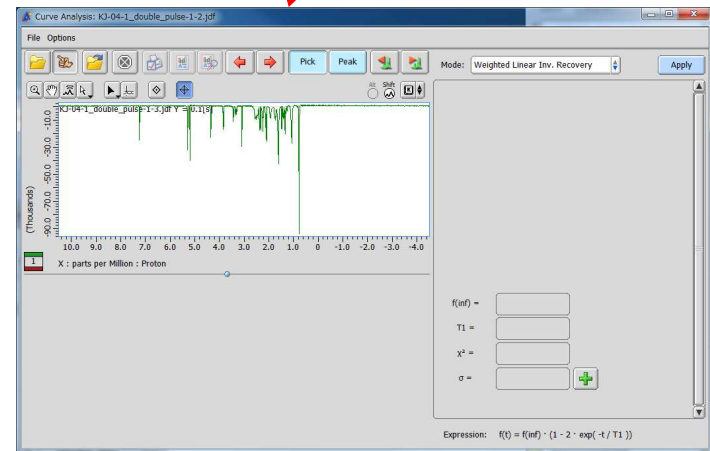
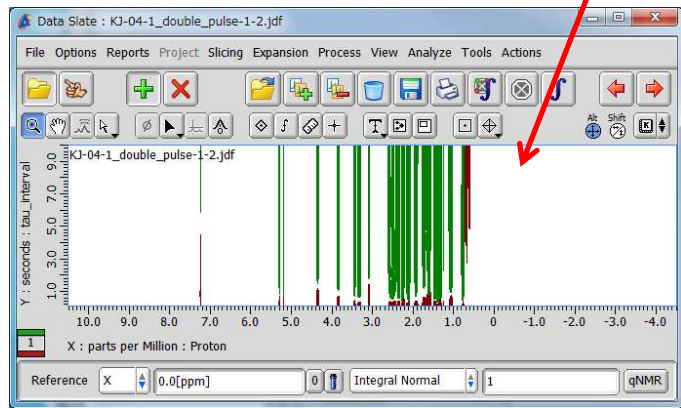
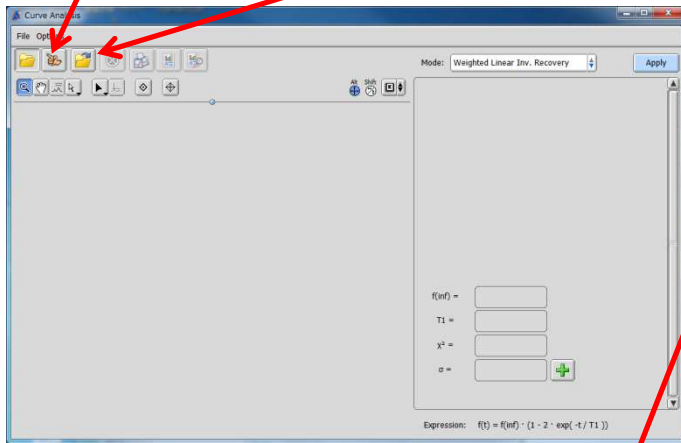
和第一副图比，多了相位处理



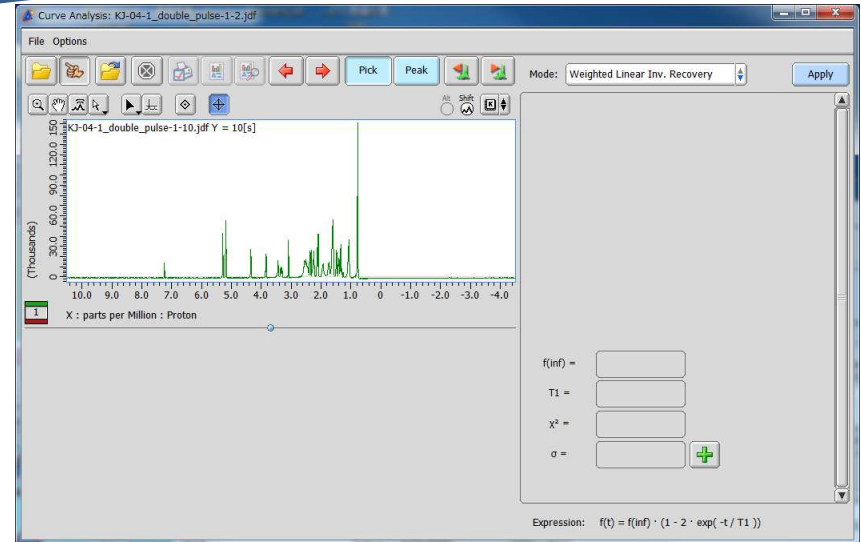
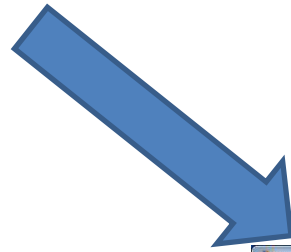
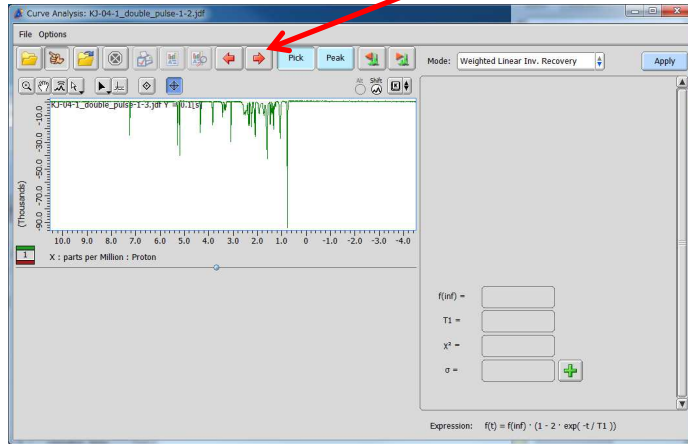
打开Curve Analysis



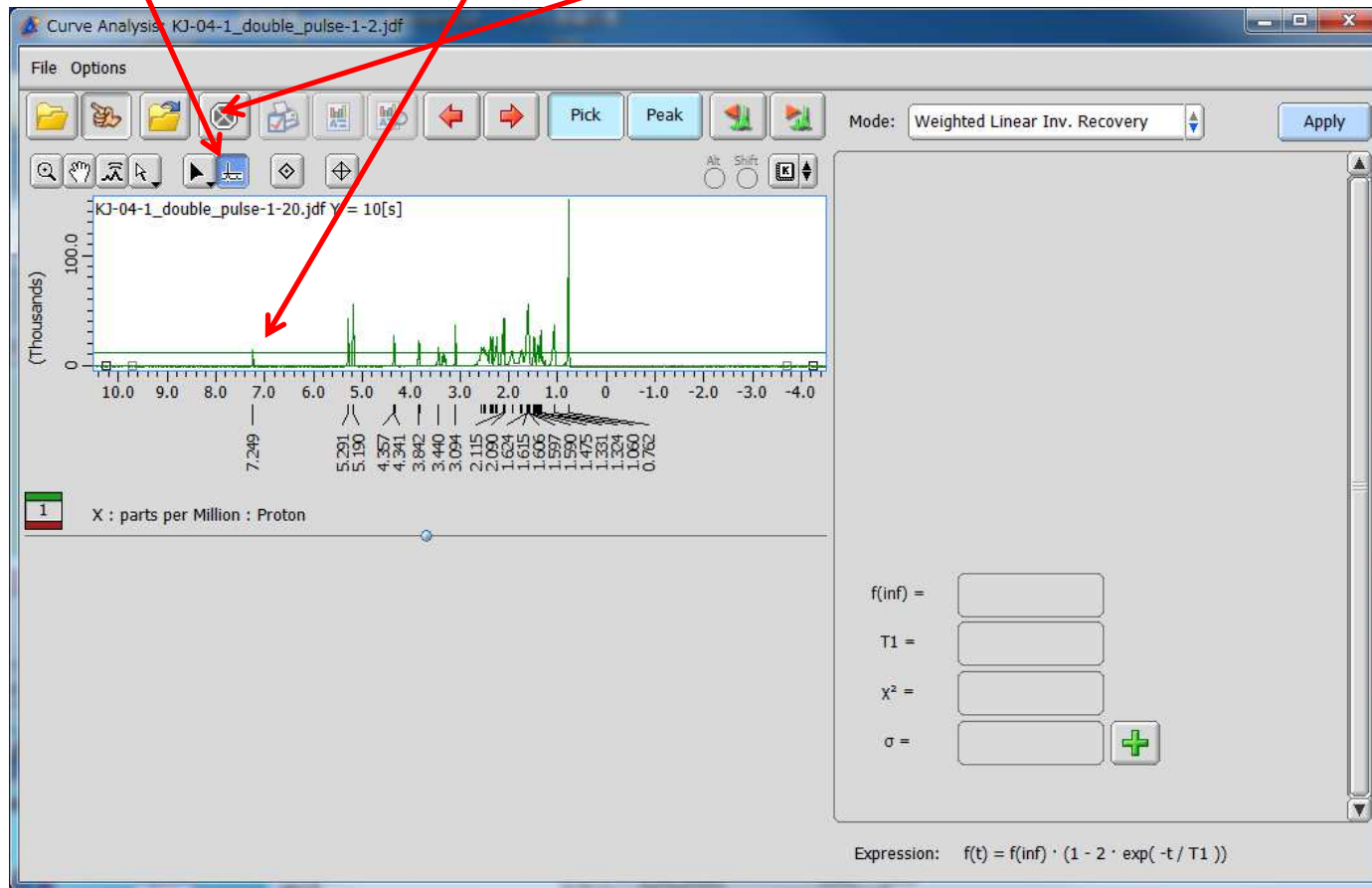
点击手指，在点击打开，鼠标会变成小手，然后点击下图，得到



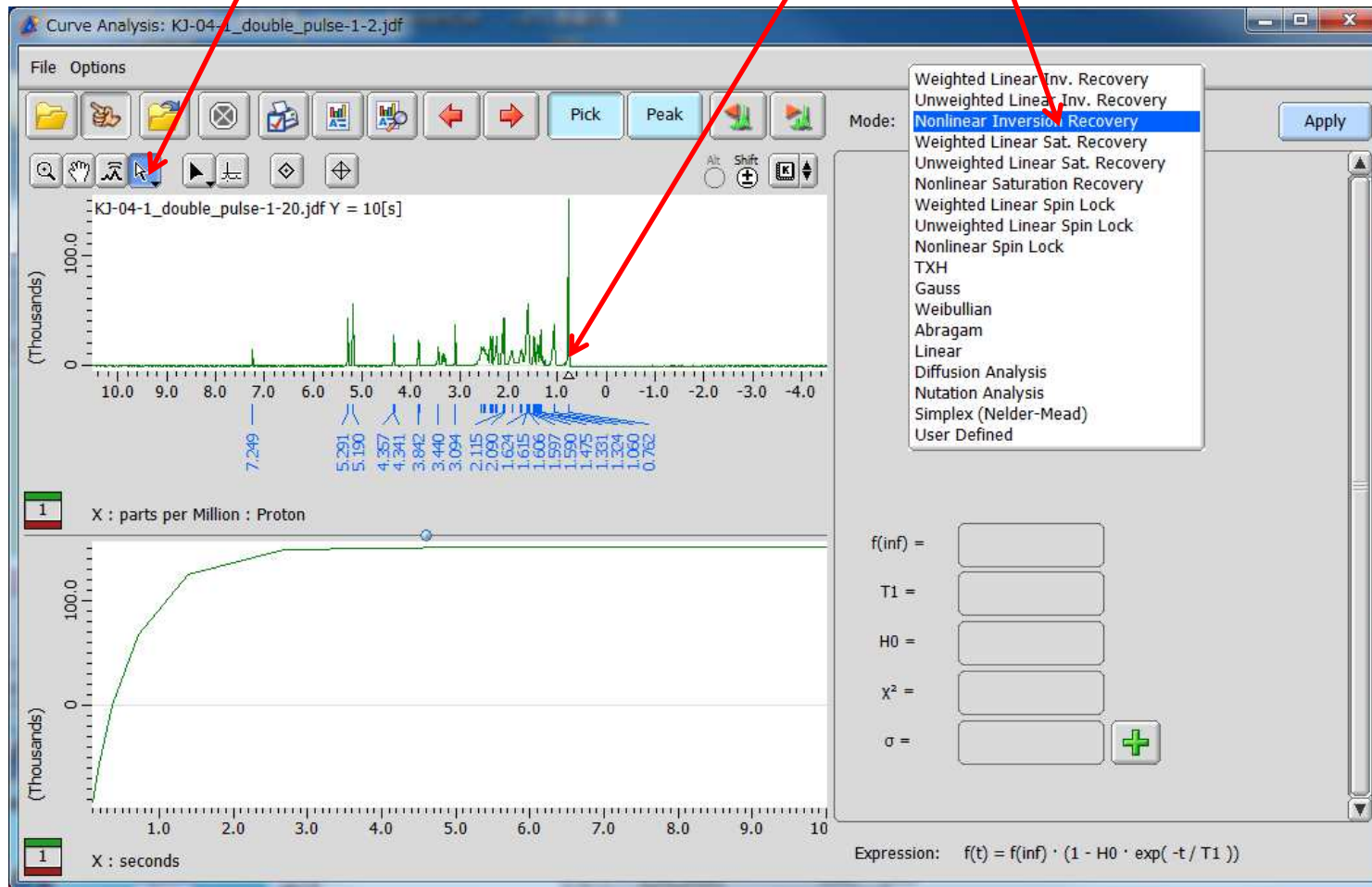
不断点击，使图朝上



点击，调整取峰阈值，点击，取峰



用选择图标，选择要计算的峰，选
Nonlinear Inversion Recovery，或者
Unweighted Linear Inv. Recovery



点击Apply, T1值会在此处自动算出

